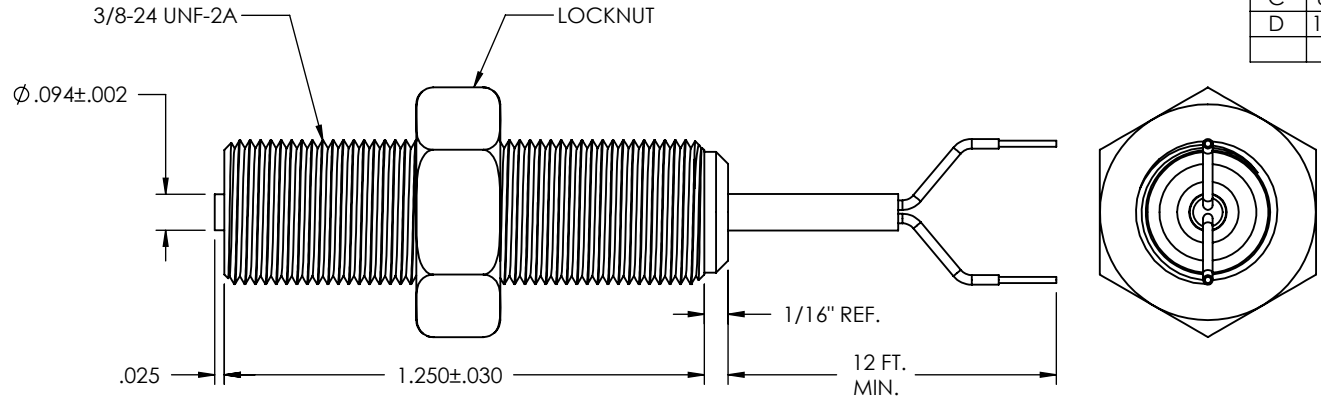


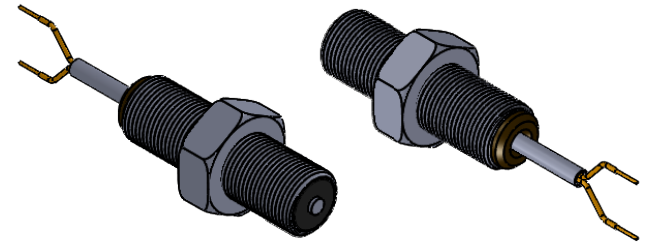
REV	ECN	REVISION RECORD	DATE	DR	CK
A	1064	CHNG LEAD WIRES TO SHLD CABLE	11-02-88		LOC
B		TEFLON CABLE WAS PVC CABLE	03-21-97		LOC
C	8794	REDRAW IN CAD	10-25-13	PF	MG
D	10140	WIRE LENGTH UNIT CHANGED TO FT.	06-09-16	PV	JR



TEMPERATURE RANGE	OUTPUT VOLTAGE PEAK TO PEAK	DC RESISTANCE OHMS	INDUCTANCE MILLIHENRYS	OUTPUT CONNECTION	INSULATION RESISTANCE	NET WEIGHT
-65°F TO +225°F	60-90 VOLTS (SEE NOTE 1)	390-530 AT 75°F	112 NOM.	SHIELDED CABLE TEFLON AWG # 26	100 MEGOHMS MIN. AT 500 VDC, COIL TO HOUSING	3.2 OZ. AVG.

NOTES:

- TESTED AT 1000 INCHES/SECOND WITH A 20 PITCH, 30 TOOTH GEAR, 0.005" CLEARANCE AND 100,000 OHM LOAD SHUNTED BY 250 MMF.
- WITH APPROACH OF FERROUS METAL, WHITE LEAD IS POSITIVE WITH RESPECT TO BLACK LEAD.



CONSTRUCTION:

HOUSING - 303 STAINLESS STEEL
 POLE PIECE - 416 STAINLESS STEEL
 POTTING - EPOXY RESIN

DO NOT SCALE THIS DRAWING

THIS DOCUMENT, ALL INFORMATION CONTAINED IN AND ALL INFORMATION RELATED TO, IS PROPERTY OF DYNALCO. IS CONFIDENTIAL TO IT AND NO PART THEREOF NOR ANY SUCH INFORMATION MAY BE COPIED, DISSEMINATED OR USED IN ANY MANNER WHATSOEVER WITHOUT THE PRIOR WRITTEN CONSENT OF DYNALCO AND IS TO BE RETURNED TO DYNALCO UPON REQUEST.

UNLESS OTHERWISE SPECIFIED

DIMENSIONS ARE IN INCHES
 DIMENSIONAL TOLERANCES:
 FRACTIONAL ± 1/64
 ANGULAR: ± 1/2°
 XX ± 0.010
 XXX ± 0.005

THIRD ANGLE PROJECTION

DYNALCO

MODEL: M334 DRAWN H.WIRE
 DATE: 9-14-88 PATH: N:\PROD\PICKUPS\M334 APPROVED L.CILA
 MATERIAL: P/L M334 TITLE: MAGNETIC PICKUP, MODEL M334
 FINISH: SIZE DWG. NO. 800-0334 REV D
 DO NOT SCALE DRAWING SCALE WEIGHT SHEET 1 OF 1