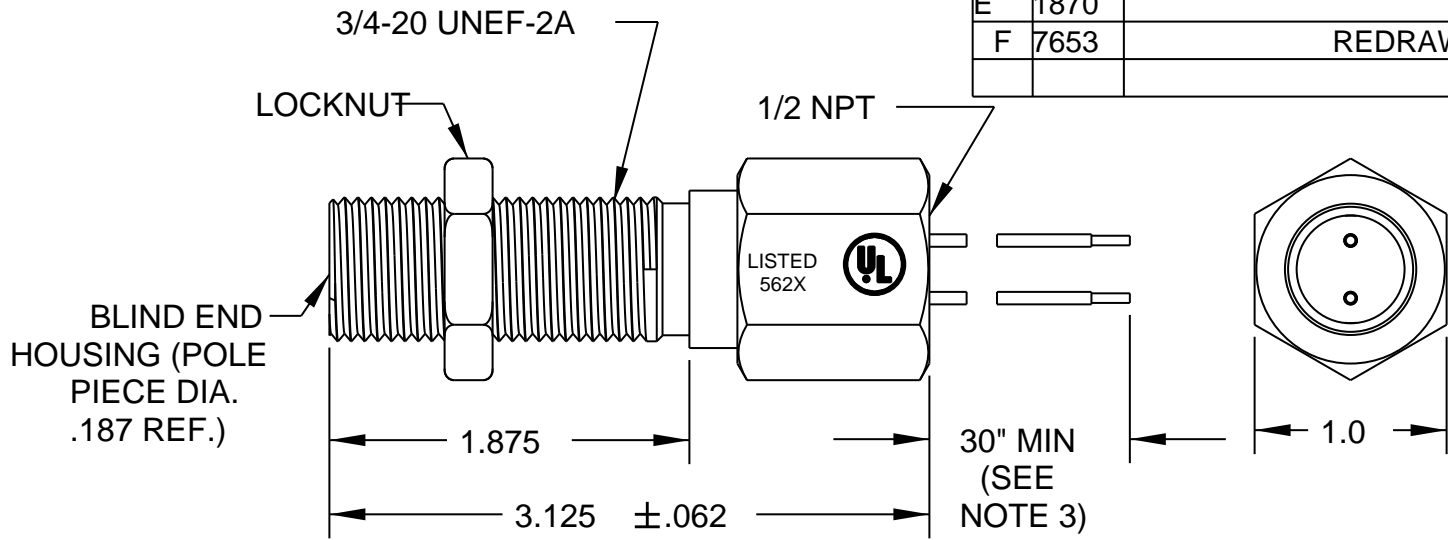


| REV | ECN | DESCRIPTION | DATE | DR | CK |
|-----|------|-------------|---------|----|-----|
| E | 1870 | | 1/6/95 | KP | LOC |
| F | 7653 | REDRAW | 9/20/11 | PF | MG |



LISTED WITH UNDERWRITERS LABORATORIES, INC. CLASS I, GP A,B,C,D CLASS II, GP E,F,G

CERTIFIED

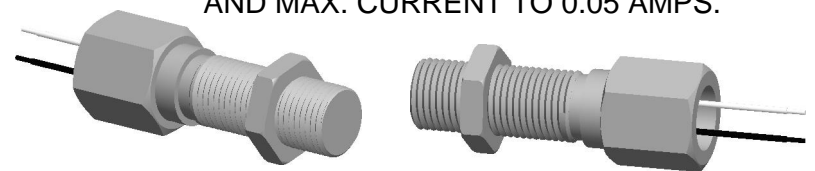
CLASS 1 GROUPS A,B,C,D

| TEMPERATURE RANGE | OUTPUT VOLTAGE PEAK TO PEAK | DC RESISTANCE OHMS | INDUCTANCE MILLIHENRYS | OUTPUT CONNECTOR | INSULATION RESISTANCE | NET WEIGHT |
|---|------------------------------|----------------------|------------------------|---------------------------------|---|-----------------|
| -100 ° F to +200 ° F MAX. AMBIENT OR MTG. TEMP | 60-100 VOLTS (SEE NOTE 1) | 170-210 AT 75 ° F | 35 NOM. | NO.18 AWG LEADS (SEE NOTE 2) | 100 MEGOHMS MIN. AT 500 VDC, COIL TO HOUSING | 5.2 OZ. AVG. |

NOTES:

- 1- TESTED AT 1000 INCHES/SECOND WITH AN 8 PITCH, 12 TOOTH GEAR, 0.005" CLEARANCE AND 100,000 OHMS.
- 2- WITH APPROACH OF FERROUS METAL, WHITE LEAD IS POSITIVE WITH RESPECT TO BLACK LEAD.
- 3- UP TO 100 ft. OPTIONAL.

INSTRUMENT OR INSTALLATION MUST LIMIT GENERATED VOLTAGE TO 95V RMS (270 VOLTS PEAK TO PEAK) AND MAX. CURRENT TO 0.05 AMPS.



CONSTRUCTION:

HOUSING ----- 303 STAINLESS STEEL
 POTTING ----- EPOXY RESIN

THIS DOCUMENT, ALL INFORMATION CONTAINED IN AND ALL INFORMATION RELATED TO IS PROPERTY OF DYNALCO CONTROLS. IS CONFIDENTIAL TO IT AND NO PART THEREOF NOR ANY SUBSTANTIAL INFORMATION MAY BE COPIED, DISSEMINATED OR USED IN ANY MANNER WHATSOEVER WITHOUT THE WRITTEN CONSENT OF DYNALCO AND IS TO BE RETURNED TO DYNALCO UPON REQUEST.

| TOLERANCES | ANGLES |
|-----------------|--------|
| FRACT. DEC. | ±1/2° |
| ±1/64 .XXX±.005 | |
| .XX±.01 | |

MATERIAL

FINISH

| | | | |
|----------------------------------|------------------------|--------------|----------|
| | THIRD ANGLE PROJECTION | Sheet 1 of 1 | |
| DYNALCO | | | |
| MODEL | M104 | DRAWN | PF |
| PATH | MPROD\PICKUPS\M104 | APPROVED | HM |
| TITLE OUTLINE AND SPECIFICATIONS | | | |
| M104 U.L. LISTED MAGNETIC PICKUP | | | |
| DATE | 03/15/78 | REV | F |
| | | A | 800-1042 |